

Gravity Sim README file (Windows)

Install NetLogo (~ 3 minutes)

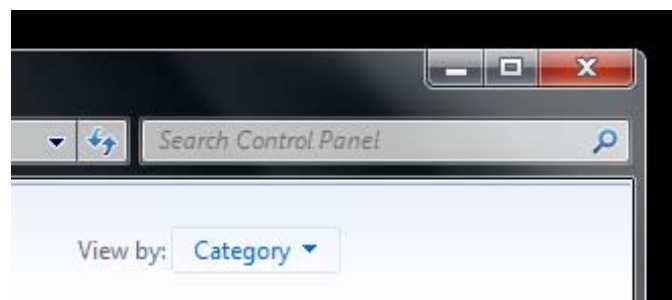
Download the software from here: <http://ccl.northwestern.edu/netlogo>

Install as you would any other Windows application.

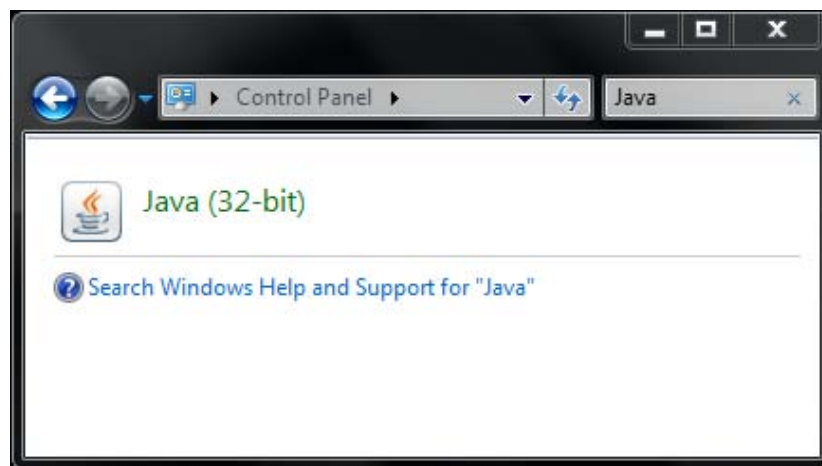
Allocating Java Memory (~ 1 minute)

In order to run the Gravity Sim application on your PC, you will first need to ensure that Java has enough memory. This is very easy to do and should take about one minute.

- 1) Click the Start button and open Control Panel:

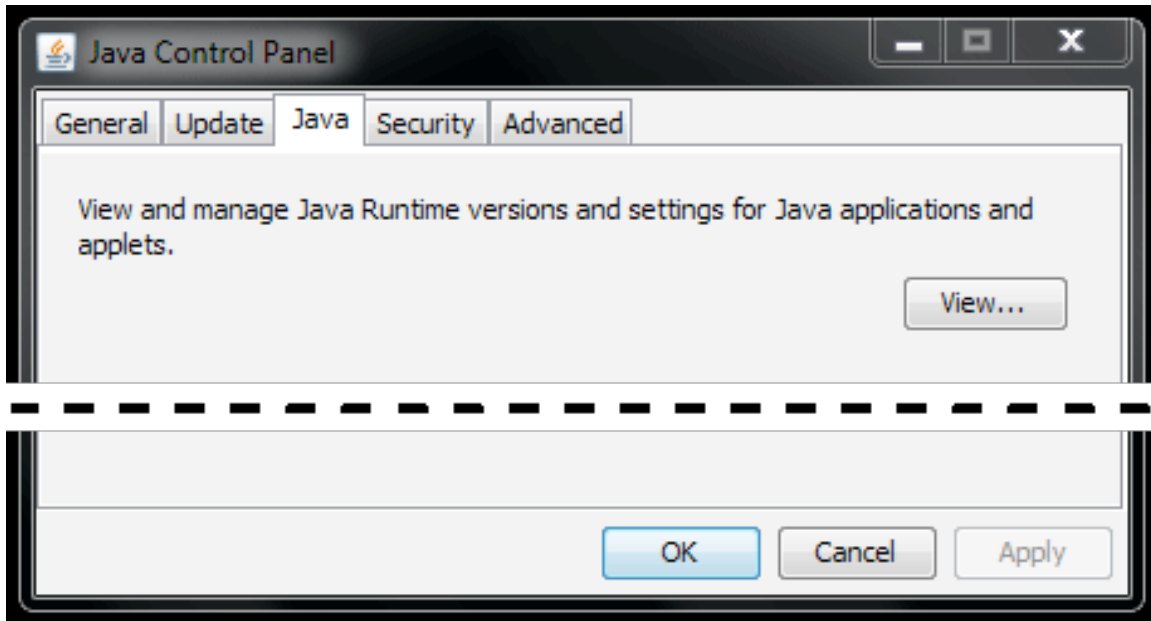


- 2) Type "Java" in the 'Search Control Panel' field and click the Java icon that appears.



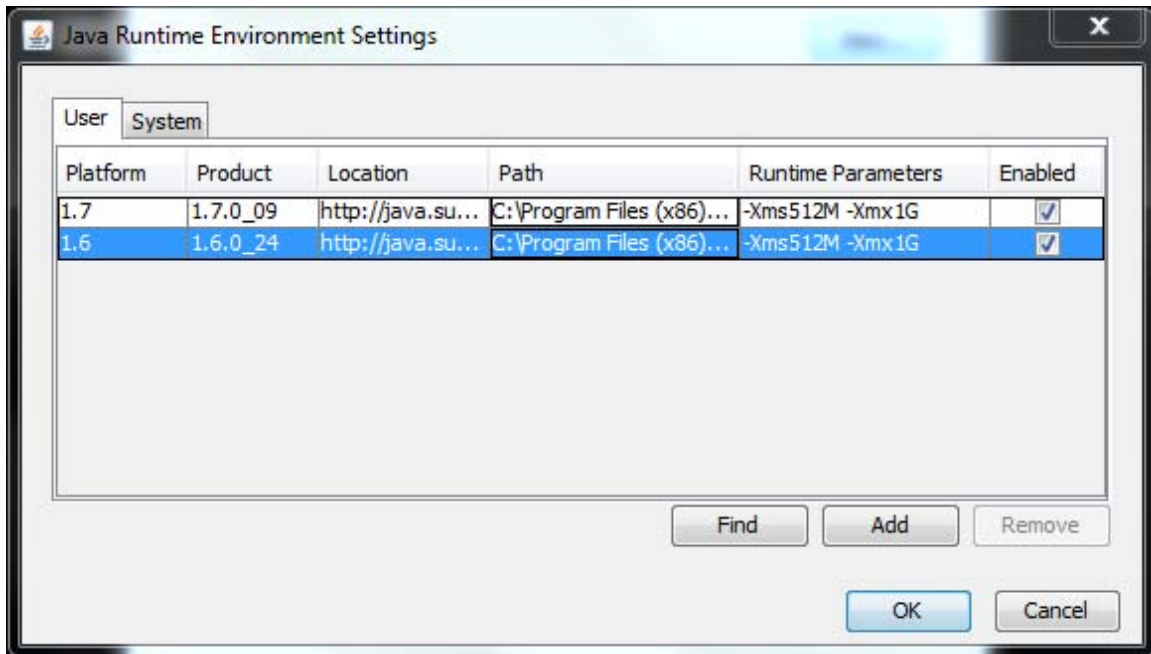
Gravity Sim README file (Windows)

- 3) Click the **Java** tab on the Java Control Panel; then click the **[View...]** button.



- 4) Cut and paste the following text into the **Runtime Parameters** field(s):

`-Xms512M -Xmx1G`



The first part tells Java to start with at least 512 MB of heap memory. The second part tells Java to allocate no more than 1 GB of heap memory. Click **[OK]** to close the windows. You are done.

Gravity Sim README file (Windows)

Removing (closing) the NetLogo Command Center Window

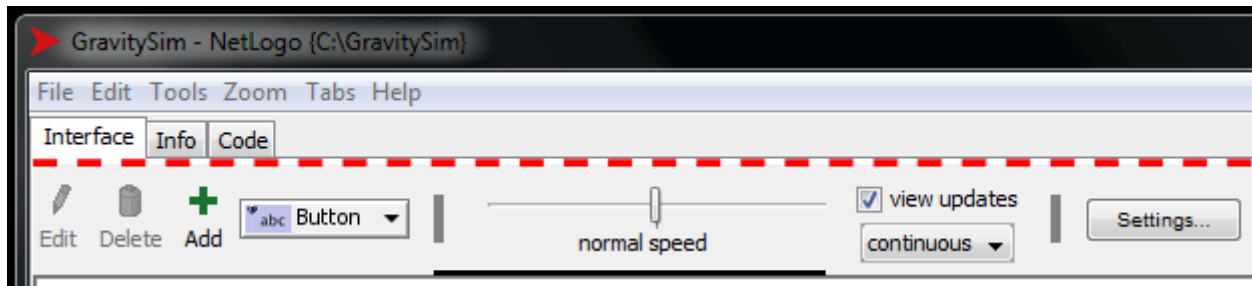
When you first open the application, unless you have an unusually high-resolution monitor, the extraneous NetLogo **Command Center** window, which is only useful during development, will be taking up valuable screen space at the bottom. You may remove it:

On the NetLogo **Tools** menu, select **Hide Command Center** or press [Ctrl /].

If needed, use the NetLogo **Zoom** menu and window resizing to get the best fit of the application interface to your screen.

NetLogo development controls

Unlike a standard commercial application, GravitySim is an “academic” application, which runs in the NetLogo development environment. As such, the tools of the development environment are always available but they serve no purpose in runtime mode. You should only use the Zoom menu and the three tabs (Interface, Info, Code); using or changing any of the controls below the red line shown here is likely to either break the application or cause undesirable behavior.



Be sure to consult the contents of the **Info** tab prior to running the simulations.

Join the conversation on the Facebook page: www.facebook.com/GravitySim